



PRODUCT SUMMARY

QUARTER-TURN SD RANGE

TYPE	TORQUE in-lbs	OPERATING TIME sec
OA3	310	5
OA8	885	5
OA8	885	25
OA15	1,328	15, 25
AT25	2,213	12, 25, 50
AT50	5,311	25
BT100	10,621	50



GEARBOXES

QUARTER TURN
2,210 to 885,100 in-lbs

SPUR GEAR MULTITURN
2,210 to 88,510 in-lbs

BEVEL GEAR MULTITURN
2,210 to 44,255 in-lbs



MULTITURN

TYPE	TORQUE in-lbs	OPERATING SPEED rpm
ST6	531	13 to 110
ST14	1,239	13 to 144
ST30	2,655	19 to 144
ST70	6,196	19 to 226



FAIL SAFE SPRING RETURN

TYPE	TORQUE in-lbs	OPERATING SPEED rpm	
		ELECTRICAL	SPRING
FQ04	354	12 to 28	3
FQ08	708	28	2
FQ12	1,062	33 to 78	2
FQ18	1,593	78	3
FQ30	2,655	98	7
FQ50	4,426	98	9



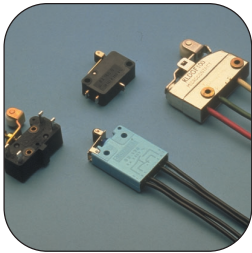
BERNARD

OPTIONS



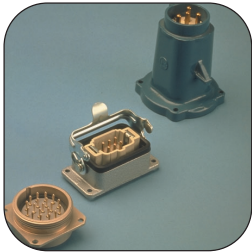
HEATING RESISTOR

- 24 V
- 110 V
- 220 V
- 380 V
- 415 V



SPECIAL CONTACTS

- DPDT
- Waterproof
- Encapsulated
- Tandem



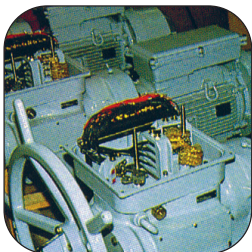
MULTIPIN PLUGS

- Power
- Control

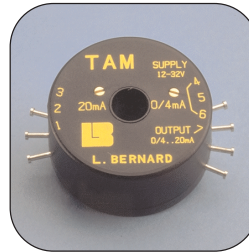


EXPLOSION PROOF

- EEx ed
- EEx d

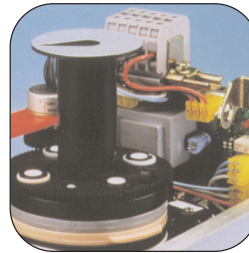


NUCLEAR VERSION

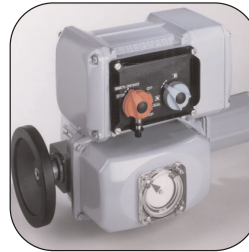


REMOTE INDICATION

- Potentiometer
- 4-20 mA transmitter
- Contactless transmitter



MINIGRAM+ VERSION MINIGAL+ VERSION



INTEGRAL+ VERSION

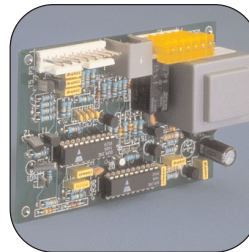


INCORPORATED POSITIONER 4-20mA

- Class III
- Class II
- Class I



INTELLI+ VERSION



FIELDBUS VERSION

- Dupline DS 200
- Profibus DP
- Modbus RTU

